



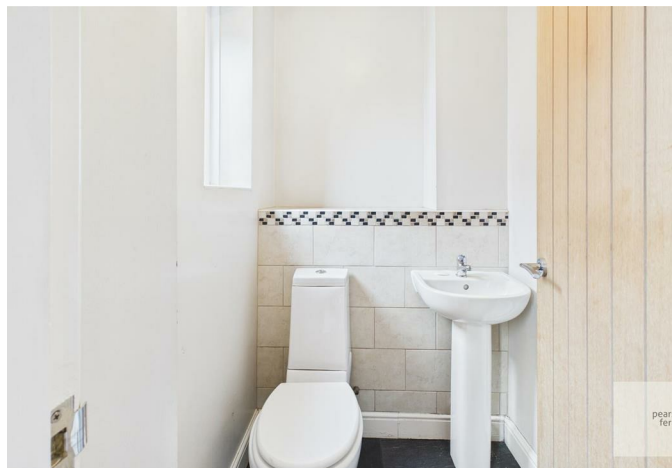
19 BEAULY CLOSE  
Holcombe Brook, BL0 9WB  
Offers In The Region Of £500,000



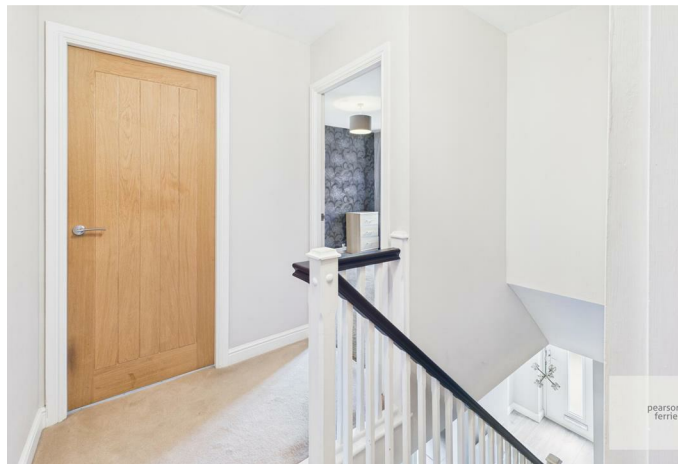
# 19 BEAULY CLOSE

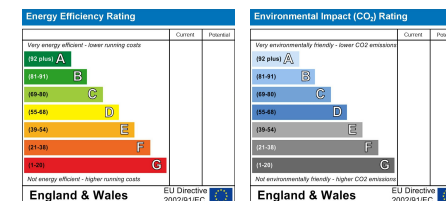
## Property at a glance

Beauly Close, Holcombe Brook is a smartly presented, four bedroom detached house, located on this highly regarded residential development in the heart of this sought after area. The house is offered for sale with no onward chain, is within walking distance of extensive local amenities, schools and shops and a short drive to Ramsbottom and Bury centres and onwards to the motorway network. The house benefits from double glazing and is warmed by gas fired central heating, the accommodation briefly comprises; entrance hall with guests wc/cloaks, study, dining room, living room, conservatory, recently fitted kitchen, first floor, four bedrooms the main with an ensuite shower room and additional family bathroom. Outside there is a generous side driveway leading to a detached twin garage and an enclosed rear patio garden. Council Tax Band E/Leasehold Property unexpired term of 999 years/£100pa Ground Rent









Ramsbottom Office  
 11 Bolton Street, Ramsbottom, BL0 9HU  
 Telephone: 01706 822630  
 Fax: #  
 Email: ramsbottom@pearsonferrier.co.uk

[www.pearsonferrier.co.uk](http://www.pearsonferrier.co.uk)



All statements contained in these particulars are for indicative purposes only and are made without responsibility on the part of Pearson Ferrier and the vendors of this property and are not to be relied on as statements or representations of fact. Potential purchasers should satisfy themselves by inspection or otherwise as to the accuracy of such details contained in these particulars.